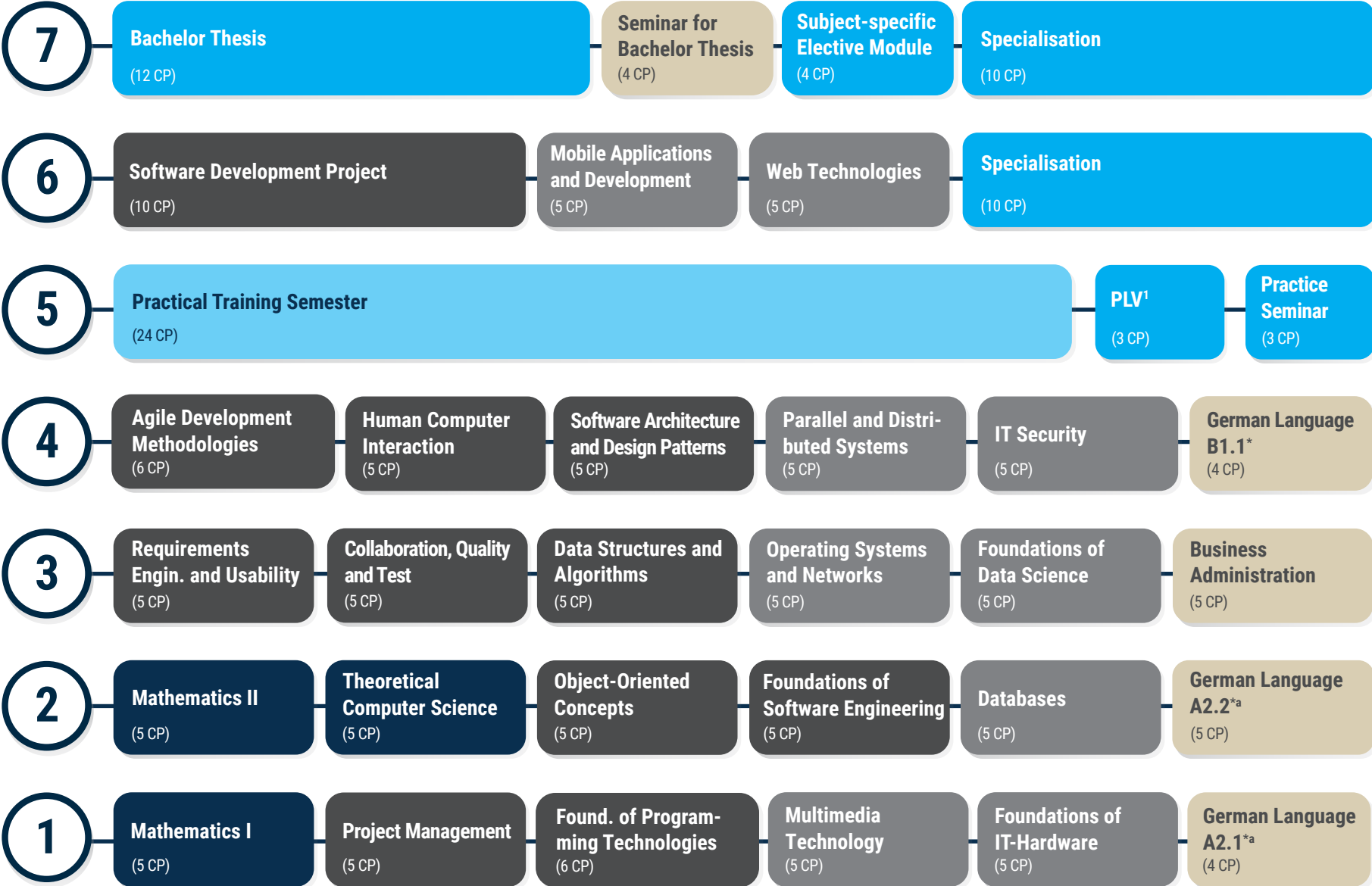


Study Progress Plan Software Design International (Bachelor of Science)

Semester



- Analytical, Design and Implementation Competences as well as Project Management Competences
- Technological Competences
- Interdisciplinary
- Formal, Algorithmic and Mathematical Competences
- Electives
- Practical Training Semester

¹PLV = Accompanying Practice Specialisation (Praxisbegleitende Lehrveranstaltung)

*For alternatives, see Study and Examination Regulations